



Empower • Mobilize • Manage

ST7 LIFE BATTERY

QUICK RESOURCE GUIDE





Empower • Mobilize • Manage

ST7 LIFE BATTERY

QUICK RESOURCE GUIDE



PRODUCT SPECIFICATIONS

- UL/CSA 60601-1 (pending)
- Weight: Under 20 lbs.
- Recharge Time: Approx. One Hour
- Run Time: Laptop, 15 – 17 Hours
- Run Time: PowerCube II & Monitor, 6-10 hours
- Life Cycles: 3000+ Cycles
- Overheating Resistant
- DC Output Only
- Two Main Software Programmable DC Outputs
 - Voltage Range: 3 – 24 Volts
 - Current Output: 0 – 10 Amps
- One Auxiliary Software Programmable DC output
 - Voltage Range: 3 – 18 Volts
 - Current Output: 0 – 5 Amps

INCLUDED HARDWARE & ACCESSORIES

- Power Cord
- Cable Harness
- Peripheral Cables
- Universal Tip Kit
- LED Indicator Board
- Quick Resource Guide

IMPORTANT SAFETY INFORMATION



WARNING: READ AND SAVE THESE INSTRUCTIONS – This Quick Resource Guide contains important instructions for the ST7 LiFe Battery system that should be followed during installation and maintenance of the battery.

- 1** The ST7 LiFe Battery system is intended for use in an indoor controlled temperature area free of conductive contaminants.
- 2** The ST7 LiFe Battery system generates a Direct Current (DC) voltage output and is for use with portable computers and electronic data processing loads only.
- 3** Do not disassemble the ST7 LiFe Battery system. There are no internal user serviceable parts including fuses.



CAUTION: Hazardous live parts within the ST7 LiFe Battery system remain energized even when the unit is disconnected from the AC wall outlet and in standby mode.

- 4 To reduce the risk of electrical shock, switch the ST7 LiFe Battery system to standby mode, and unplug the unit before attempting to perform any maintenance or cleaning.
- 5 To reduce the risk of damage to the cord or electric plug, always disconnect the ST7 LiFe Battery system power cord by pulling the plug and not the cord.
- 6 Do not operate the ST7 LiFe Battery system if it has received a sharp blow, or has been dropped or damaged in any way. Please contact InfoLogix immediately for further instructions.
- 7 In order to maintain safe operating conditions, keep the ventilation openings clear.
- 8 When replacing batteries only use replacement batteries recommended by the manufacturer – see battery replacement information on the InfoLogix Support website, located at **www.infologix.com/st7life/replacement**.
- 9 For additional information, the ST7 LiFe Battery User Guide is located at **www.infologix.com/support**.

FEDERAL COMMUNICATIONS COMMISSION WARNING

This device complies with Part 15 of the FCC Rules and Regulations. Operation is subject to the following two conditions:

- This device may not cause harmful interference and
- This device must withstand any interference received, including interference that may cause undesired operation.

The ST7 LiFe Battery system is a Class A digital device pursuant to Part 15 of the FCC Rules and Regulations. These limits are designed to provide reasonable protection against harmful interference when this equipment is operated in a commercial environment. This equipment generates, uses, and can radiate radio-frequency energy and, if not installed and used in accordance with the installation manual, may cause harmful interference to radio and television communications. Operation of this equipment in a residential area is likely to cause interference, in which case the user will be required to correct the interference at his or her own expense. Do not attempt to repair or modify this equipment. Any repairs to the unit must be performed by InfoLogix or an InfoLogix-authorized representative.

- Maximum Combined Output = 300 Watts DC 100 each output
- Classification
- Class 1
- No applied Parts
- Ordinary EQUIPMENT (enclosed EQUIPMENT without protection against ingress of water)
- No sterilization or disinfecting required
- EQUIPMENT not suitable for use in the presence of a FLAMMABLE ANAESTHETIC MIXTURE WITH AIR or WITH OXYGEN OR NITROUS OXIDE
- Intended for continuous operation

KEY MARKINGS



On – Moving the rear switch to the up position will allow the ST7 LiFe Battery system to energize the power outlets. If the unit is plugged in at the time this switch is moved to the “on” position it will not be necessary to energize the LiFe Battery system, once the unit is unplugged from power.



Standby - Moving the rear switch to the down position will turn off the power at the outputs. **CAUTION:** Hazardous live parts inside remain energized when the ST7 LiFe Battery system is in standby. The power supply cord is the means for mains disconnect. Do not at any time attempt to disassemble the ST7 LiFe Battery system.



Caution or Warning - Take all necessary safety precautions when this mark is included with instructions or labels.



Dangerous Voltage Present - Take precautions when this mark is included with instructions or labels. Dangerous voltages may be present.

SET UP & PROGRAMMING INSTRUCTIONS

WARNING: Depending on the mobile cart platform, the ST7 LiFe Battery outputs come pre-programmed from the factory. The ST7 LiFe Battery system has three (3) outputs capable of providing 5-24 volts DC. It is recommended to check to make sure the outputs are set to the correct DC voltage for the computer and auxiliary devices that will be plugged into the ST7 LiFe Battery. If they are not pre-programmed, the outputs will be turned off and they need to be configured properly before attaching equipment to the ST7 LiFe Battery. Failure to follow the directions can cause damage to the attached computer, auxiliary devices and ST7 LiFe Battery.

InfoLogix, Inc. and Power^Up Manufacturing are not responsible for device damage as a result of improper programming or connection of the device to the ST7 LiFe Battery system. Please read and understand this section prior to programming and connecting devices for the mobile cart to the ST7 LiFe Battery system.

Equipment and Software Needed for Proper Set Up & Programming

- 1** An administrative PC with the administrator programming software, Smart Power System Administrator Control, installed. The administrative PC must have an available USB connection. The programming software only needs to be installed on one PC, and does not need to be installed on each computer attached to a ST7 LiFe Battery system.
- 2** The computer and auxiliary devices that will be attached to the ST7 LiFe Battery system. Do not connect them to the ST7 LiFe Battery system until all Set Up and Programming steps are complete.
- 3** Known voltage requirement for the computer and auxiliary devices that will be attached to the ST7 LiFe Battery system.

(CONTINUED)

- 4 One universal tip kit for each device to be attached to the ST7 LiFe Battery system (included).
- 5 One peripheral cable for each device to be attached to the ST7 LiFe Battery system (included).
- 6 An AC wall outlet.

Administrator Programming Software Installation

Before beginning, the user needs to download the administrator programming software from the InfoLogix website at www.infologix.com/st7life/setup. It is recommended the software be installed on a separate administrative PC, not the computer that will be used on the mobile cart.

Note: DO NOT plug the ST7 LiFe Battery into the USB port until the administrative software is installed. Once the installation file is downloaded to the administrative PC, open the installation file and run the installation. Press “Next” to step through the installation and choose the path where the program will be installed. By default, an icon is placed on the desktop to access the program. The icon is called “Smart Power System Administrator Control.” Before running the program, it is recommended to 1) locate and document the correct voltage required for the computer and auxiliary devices for the mobile cart and 2) connect the administrative PC to the ST7 LiFe Battery.

IDENTIFYING DEVICE VOLTAGE REQUIREMENTS

It is necessary to know and document the required voltage of the devices that will be attached to the ST7 LiFe Battery. To find this information, refer to the specification labels on the devices or power supply provided with the devices (see Image A).



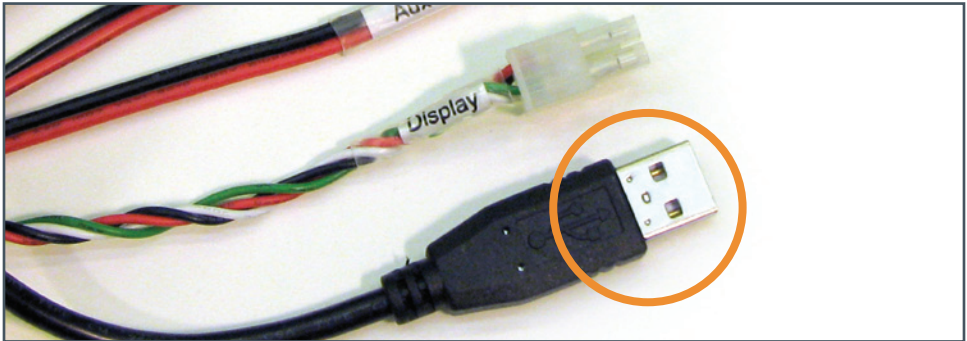
A

NOTE: The output DC voltage can be different for all devices.

DRIVER INSTALLATION

Plug the ST7 LiFe Battery into a wall outlet and make sure the rear switch is in the down or “off” position before doing any service.

Remove the mobile cart work surface cover and set it aside. The cable harness for the ST7 LiFe Battery is located inside. The cable harness breaks out into five individual cables. One of these cables is the USB connection to be used for setting the battery (see Image B).



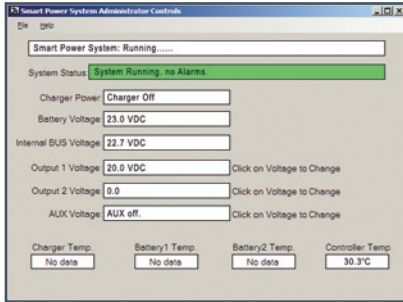
B

With the administrative PC turned on, plug the USB connection into the administrative PC and allow it to load the appropriate drivers.

If the “Found New Hardware” wizard comes up, step through and select it to “Install the software automatically.”

PROGRAMMING OUTPUT VOLTAGE

Launch the “Smart Power System Administrator Control” program by double clicking on the icon on the desktop. The administrative dashboard will open, find the connected battery, and display the load and output settings (see Image C).



C

To set the voltage for the computer and auxiliary devices, click on the outputs that need to be changed, type in the appropriate voltage of the devices, and press the “Enter” key on the administrative PC. If unsure of voltage output, refer to Identifying Device Voltage Requirements section.

(CONTINUED)

When programming multiple ST7 LiFe Battery systems, always remain consistent when setting voltage for the batteries.

- Output 1: typically for the computer
- Output 2: typically for the monitor
- Aux: typically for the auxiliary devices, like wireless bar code scanners or vital monitors.

Note: If an output has already been programmed to a specific voltage and needs to be turned off, type “0” (zero) in the text box. Turning off unused outputs will ensure the longest runtime possible.

Once the voltage is set for the outputs, close the program, unplug the USB from the administrative PC and set the computer aside.

CONNECTING BATTERY PERIPHERAL CABLES

Before connecting any peripheral cables, make sure the ST7 LiFe Battery is unplugged from the wall outlet and the rear switch is in the down or “off” position. The battery peripheral cables come with a universal tip kit and a blank end on the cable (see Image D). Select the tip that fits into the device that will be attached to the ST7 LiFe Battery. Plug the selected tip into the blank end on the peripheral cable and then plug the tip into the device.

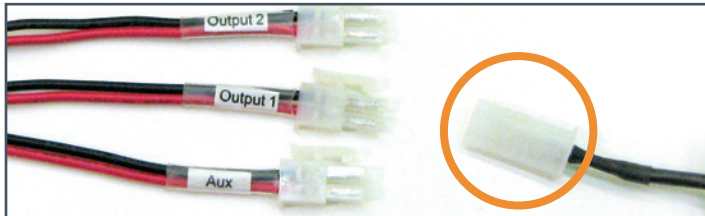


D

Hint: For easy tip selection, compare the tip kit with the tip of the power supply provided with the device.

CONNECTING BATTERY CABLE HARNESS

On the other end of the peripheral cables is a white connector. The white end needs to attach to the appropriate output cables on the cable harness (see Image E). The output cables are labeled “Output 1,” “Output 2,” and “Aux.”



E

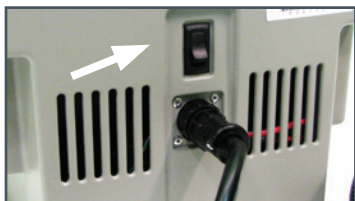
The devices **MUST** be connected to the corresponding programmed outputs. If unsure, please refer to the Programming Output Voltage section.

- Output 1: typically for the computer
- Output 2: typically for the monitor
- Aux: typically for the auxiliary devices, like wireless bar code scanners or vital monitors.

Finally, plug the USB cable from the cable harness that was used for the administrative programming into the computer that will be used on the mobile cart to enable battery monitoring.

TURNING THE ST7 LIFE BATTERY ON & OFF

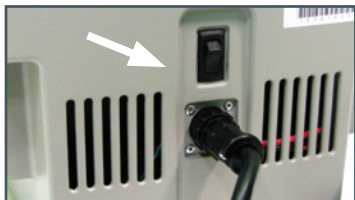
The ST7 LiFe Battery is shipped from the factory ready to use. **Before turning on the new battery for the first time please refer to the previous sections for proper set up and programming of the ST7 LiFe Battery system. Failure to follow the directions can cause damage to the attached computer, auxiliary devices and ST7 LiFe Battery.**



F

Turning On the ST7 LiFe Battery

To power up the ST7 LiFe Battery, press the rear switch of the ST7 LiFe Battery to the up or “on” position (see Image F). Turn on the computer and auxiliary devices on the mobile cart. Follow the device manufacturers’ specific instructions.



G

Turning Off the ST7 LiFe Battery

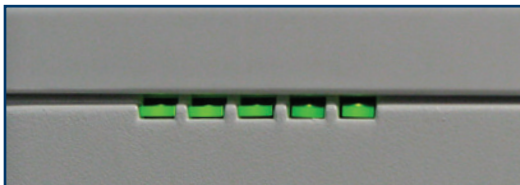
Before turning off the ST7 LiFe Battery, be sure to follow the manufacturers’ recommendations for turning off the computer and auxiliary devices powered by the ST7 LiFe Battery. To turn off the ST7 LiFe Battery, press the rear switch to the down or “off” position (see Image G).

CHARGING THE ST7 LIFE BATTERY

To charge the ST7 LiFe Battery, plug the battery into a wall outlet at any time. The ST7 LiFe Battery system will automatically detect the battery status and begin charging the battery. The LED display on the front of the mobile cart will indicate the battery is charging by blinking (see Image H). There is no need to fully discharge the battery before charging it.

When the ST7 LiFe Battery is in the “off” position or standby mode, it will continue to charge the battery when plugged into a wall outlet. When the battery is unplugged from the wall outlet, make sure to flip the rear switch to the up or “on” position if the mobile cart is going to be in use. Otherwise, failure to do so may result in loss of power to the attached computer and auxiliary devices.

When the ST7 LiFe Battery is fully charged, it will automatically switch to a “float charge” mode. LED sections on the front of the mobile cart will be a solid green. It is safe to leave the battery plugged in while in “float charge.”



H

Note: For best performance, do not leave the ST7 LiFe Battery completely discharged. When the battery runs down, always charge it immediately. It is recommended to charge the ST7 LiFe Battery once a month during storage.

LIFEVIEW BATTERY MONITORING SOFTWARE

The LiFeView monitoring software is an application that runs on the client PC on the mobile cart. It is compatible with Windows XP Professional, Windows Vista Business, and Windows 7 Professional. LiFeView gives on-screen feedback of current battery status, including temperature, capacity, and an estimate of remaining capacity.

The LiFeView software runs minimized in the task tray, with a dynamic icon that shows capacity and charge status (see Image I). At different capacity levels, alerts will also pop up.



The main LiFeView window is accessible by double clicking on the task tray icon. The main window will automatically pop up and contain more detailed battery information (see Image J).



J

The LiFeView software can be installed at any time after the ST7 LiFe Battery system has been successfully programmed. The LiFeView software can be downloaded at www.infologix.com/st7life/setup.

For additional LiFeView installation information, the ST7 LiFe Battery User Guide is located at www.infologix.com/support.

TECHNICAL SUPPORT

To initiate support, call 215-639-8899 or 800-328-0030; at the menu prompt, select InfoLogix Support. We can be reached Monday through Friday from 8:30 AM to 5:30 PM Eastern time. Or online at www.infologix.com/support.

ABOUT INFOLOGIX

InfoLogix is a leading provider of enterprise mobility and advanced wireless asset tracking solutions for the healthcare and commercial industries. InfoLogix uses the industry's most advanced technologies to increase the efficiency, accuracy, and transparency of complex business and clinical processes.

With 19 issued patents, InfoLogix provides mobile managed solutions, on-demand software applications, mobile infrastructure products, and strategic consulting services to over 2,000 clients in North America including Kraft Foods, Merck and Company, General Electric, Kaiser Permanente, MultiCare Health System and Stanford School of Medicine.

www.infologix.com

info@infologix.com

101 E. County Line Road, Hatboro, PA 19040



QRG-LB-10/10

© 2010 InfoLogix, Inc. All rights reserved.