



HealthTrax delivers a simple yet powerful means of tracking the location and status of assets and people with a full range of visualization, reporting, management and automated alerting options, as well as the ability to deliver valuable location data to a variety of third party applications. HealthTrax unifies asset visibility data from a variety of sources and turns it into automated business processes, delivering a scalable, enterprise-proven software solution over the web.

HealthTrax Components

HealthTrax Asset Locator

The Asset Locator gives users instant visual access to all their assets' locations and status information, as well as the ability to view the entire site and drill down to particular locations.

The Asset Locator offers a rich, intuitive feature set for finding assets and viewing them on maps. It also enables users to customize how they view assets and alerts on maps.

Features include:

- Instant search for assets by multiple criteria such as category, group, name, ID, status, etc.
- 3D site-level and floor-level views with summarized asset and event information.
- View an asset location as a snapshot in time, real-time tracking or see a historical trail of locations on a map for a specified time period.
- Quickly customize the map view by selecting what types of objects to show on map.

Events and Alerting

HealthTrax's powerful Event Engine and Alert Management module offer the ability to truly transform business processes by bringing real time location and status based alerts about assets directly to users via virtually any channel.

The Event Engine allows administrators to set up rules for categories or groups of assets such as:

- Alert if the number of infusion pumps in the clean room falls below 5.
- Alert if a psychiatric patient exits a specific area.
- Alert if the refrigerator's tag reports a temperature change of more than 5 degrees.

Alerts can be configured to be sent by various means such as email, Skype chat, JMS Queue, XML message or HTTP post.

HealthTrax Components (continued)

Site Setup and Administration

Users can quickly and easily create a true-to-life, 3-dimensional representation of their site and assign maps which are automatically downloaded from a location engine to their appropriate areas. Users can also create zones on the maps using HealthTrax's Flash-based drawing toolkit. In addition to zone location and color, administrators may configure custom zone types and custom zone status values.

Asset Management

HealthTrax offers users a suite of advanced asset management tools, including:

- Separate tag and asset management
- Asset creation and tagging wizard
- Category management
- Attributes: unlimited custom properties, business status, pictures
- Dynamic icons that reflect business status
- Ad-hoc asset groups that users can create for any purpose, such as easier searching or batch updates, e.g. assets that all arrive in a single shipment may have similar maintenance schedules
- Asset visibility control to ensure users only see the assets they are permitted to view

Reporting

HealthTrax's standard reports set offer the user the flexibility to generate instant reports on demand or to pre-define report criteria and then specify a schedule by which to email the finished reports.

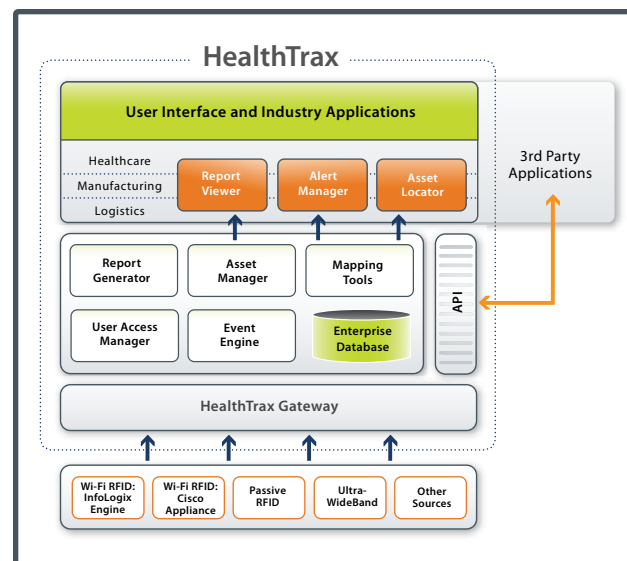
Reports are available in a variety of formats, such as CSV, PDF and HTML. In addition to the standard reports that are already available, HealthTrax also offers the ability to quickly and easily create customized reports.

User and Department Management

HealthTrax offers a robust, role-based access control model that allows administrators to control which modules and functions are accessible to each user. In addition, HealthTrax introduces the concepts of asset and area visibility: Department administration allows users to set up a visibility hierarchy that enable the administrator to control which users see which areas and assets.

System Settings Administration

System administrators can configure HealthTrax system components as well as customize HealthTrax to their site's individual needs.



HealthTrax System Requirements and Compatibility Information

This section details the minimum system requirements for a HealthTrax setup.

HealthTrax Server	
Operating System	Windows 2003 SP2
Database	Oracle 10g: 10.2.0.3 or MS SQL Server 2005
Memory	4 GB RAM
CPU	2.8 GHz
Client	
Internet Browser	<p>Microsoft Internet Explorer 7.0.x.*</p> <p>Adobe Flash Player ActiveX Control. If you do not have the player installed, HealthTrax will prompt you to download automatically the first time you access the system.</p> <p>IE 6.x can also be used with HealthTrax; however, for an optimal user experience, IE 7 is recommended.</p>
Hardware	
Tags	<p>In order to use the "Make Tag Blink" function, InfoLogix tags and exciters are required.</p> <p>In order to use the following events, InfoLogix tags are required: Temperature, Telemetry, Call Button, Battery Status Level, Motion Status.</p>

Exact server requirements depend on a detailed sizing analysis that should be performed by InfoLogix Professional Services.

Location Data Sources

The following table outlines location data sources that can be used with the current version of HealthTrax. For more information on other location data sources, contact support@infologix.com.

InfoLogix Engine Version 3.2.41 or higher

Cisco Location Appliance Cisco 2700 Series

Wireless Location Appliance:

LBS: 4.0.33.0

WLC: 5.0.148.0

WCS: 5.0.56.2

Cisco 2700 Series Wireless Location Appliance:

LBS: 3.1.36.0

WLC: 4.2.112.0

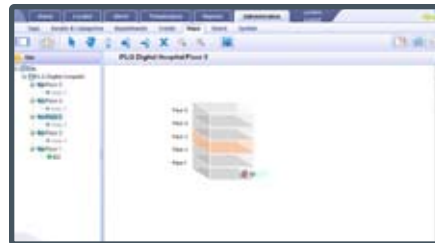
WCS: 4.2.81.0

Cisco 3300 Series Mobility Services Engine:

WCS: 5.1.52.0

Controller: 5.1.124.0

LBS: 5.1.17.0



Maps

Please note the following recommendations regarding maps that will be displayed in HealthTrax.

- Recommended formats: JPEG, PNG or GIF.
- It is not recommended to use maps with a resolution of more than 4 megapixels.



101 E. County Line Road
Hatboro, PA 19040

LEARN MORE:

www.infologix.com
info@infologix.com | 215.604.0691

SS-HC-038-05/09

© 2009 InfoLogix, Inc. All rights reserved.