

## TABLE OF CONTENTS

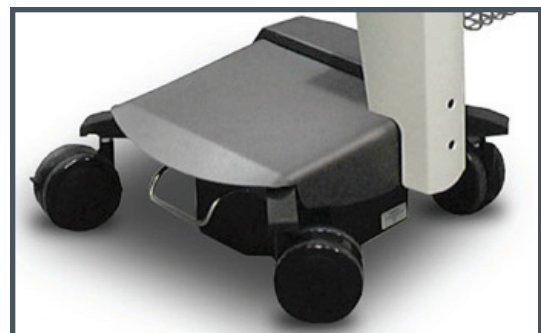
1. Product Overview
2. Unpacking, Setup and Operation
3. Battery Removal and Installation
4. Best Practices and Trouble Shooting
5. Specifications
6. Technical Support Services



## Long Lasting Full Shift Battery Power Source

This UL-listed, longest lasting and faster charging battery gives you a reliable power source well within the scope of a full shift for safe, uninterrupted use. The next generation of Ultra Carts also features a 5 LED battery power level indicator in plain view on the front panel work surface so you know your battery status at all times.

- LED front battery power gauge.
- 3 times faster recharge than the competition.
- 72% longer run time than lithium ion batteries and recharges just as fast.



# 1. BATTERY PRODUCT OVERVIEW

## High Performance Excellence

The J-24 and J-48 Battery Power Systems from JACO provide the perfect foundation on which to build your mobile wireless fleet of computer carts. Both systems are sealed-lead-acid (SLA) platforms producing true sine wave power which is the same as the power from any standard wall outlet. This means any AC device that does not exceed the recommended maximum load can run while plugged into these power systems.

### Both high performance power systems include the following standard features:

- UL 60601-1. Certified to UL/CSA Standard.
- No PC compatibility Issues: True sine wave (same as the power from a typical wall outlet).
- Ready to go. No calibration required – out of the box and fully charged.
- Simple 5 green LED power level gauge. Recharge when last LED is blinking.
- Quietest cooling fan in the industry (efficient design means fans operate less than 20% of the time).
- Fast, easy battery replacement: Less than 2 minutes (no lifting during removal and installation).
- 72% Longer run time than lithium ion batteries and recharge just as fast.
- Help Desk Support.

## Run Time Expectations

The run time of any battery solution is based on the amount of power that is being consumed. For instance, a typical laptop computer will use half the power of a full PC with LCD screen. In many cases, the goal of a mobile battery solution is to run for a full work shift. This is easily accomplished with a J-24 power solution following good practice guidelines.

The J-48 will offer the same great performance as the J-24; however, it has been designed to run a full PC with LCD screen. A full work shift of up time is also well within the scope of this battery solution when operating guidelines are followed.

Battery up time will vary based on a number of factors including temperature, repeated deep discharging and amount of power needed to run the device connected to the battery.

## Engineering Excellence and Award Winning Solutions

InfoLogix is a recognized industry leader dedicated to continuous front running technical innovations, quality engineering and user safety and ergonomics. InfoLogix has been continually headlining the top of a number of esteemed annual listings such as *Entrepreneur* magazine and Deloitte & Touche.

## 2. UNPACKING & OPERATION

All JACO Battery Power Systems arrive completely assembled and ready to use. The following steps will have you up and running in no time.

### Remove From Packaging

Remove the battery power system from packaging following the enclosed instructions:

- Do not throw away any of the packaging material until the cart is inspected and in use.
- Please inspect the battery power system carefully for damage due to shipping.
- If there is any damage, report it to the driver or freight company immediately to start claim process.
- Refer to “Warranty” section for further details.

### Initial Charge

Plug AC line cord into a wall outlet and let charge, overnight if possible.

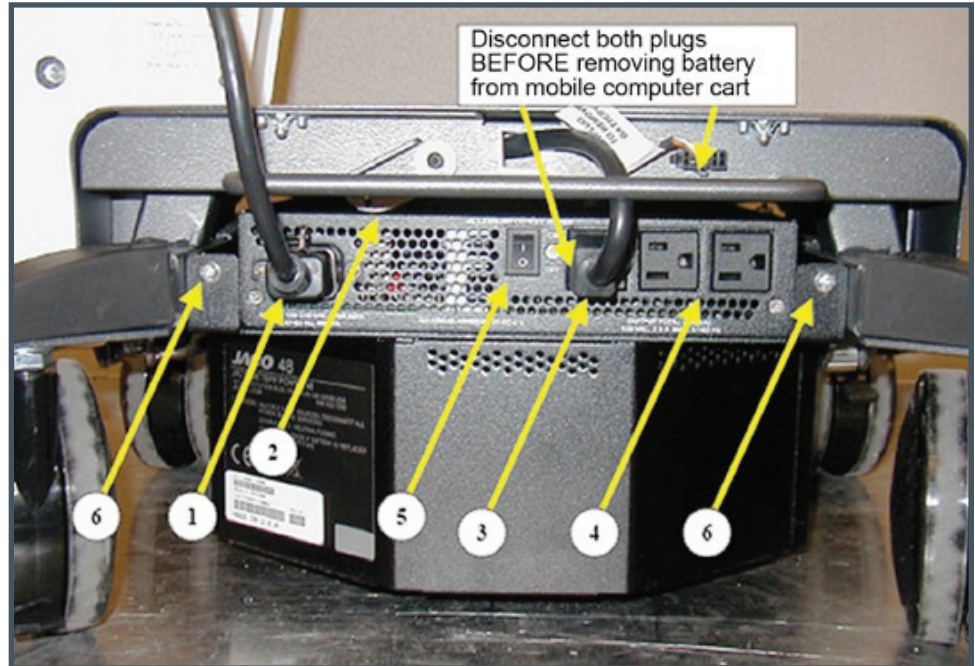
### Getting Ready to Start

- Unlock removable work surface (2 locks, both sides) and remove from cart by pulling back toward you and lifting out; put aside, as you will be re-installing soon.
- Find multi-outlet end of cart extension cord. The cord will be inside the “well”; plug PC power cord into 1 of the outlets (reference Figure 3).
- Monitor, keyboard and mouse connectors can now be attached to PC, finally placing PC in the “well”, over the wiring (reference Figure 3).
- Removable work surface can now be re-installed and relocked.
- Turn “On” Battery Power System by placing rocker switch (lower, rear of cart) in the “1” position. (reference Fig. 1 or 2 on the next page).
- Turn “On” PC, monitor and any other attached peripherals via their respective power switches.

## 2. UNPACKING & OPERATION (CONTINUED)

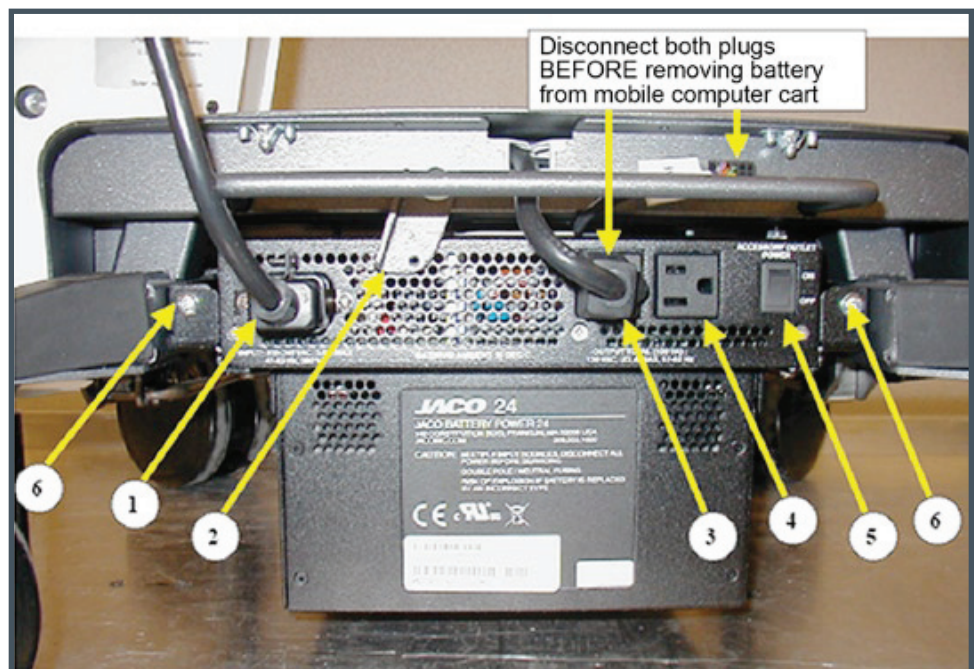
**FIGURE 1**  
**J-24 BATTERY POWER SYSTEM**

1. AC line cord (power to charger)
2. Battery power system quick release bracket (keep in “down” position, as shown)
3. Multi-outlet extension cord connected to battery-powered, AC outlet
4. Auxiliary AC outlet (unused)
5. On/Off rocker power switch
6. Shipping screws (to be removed during unpacking/ initial setup)



**FIGURE 2**  
**J-48 BATTERY POWER SYSTEM**

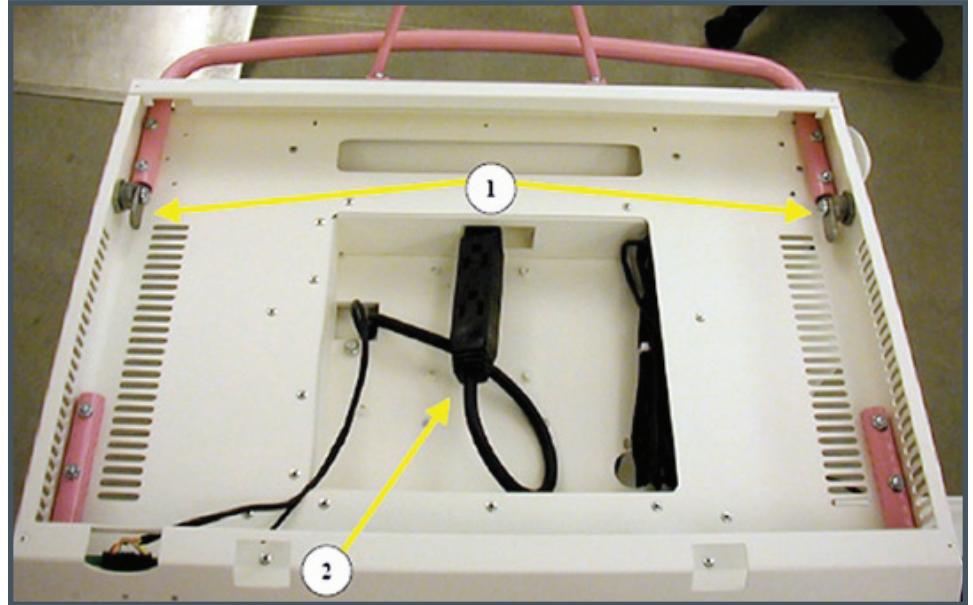
1. AC line cord (power to charger)
2. Battery power system quick release bracket (keep in “down” position)
3. Multi-outlet extension cord connected to battery-powered, AC outlet
4. Additional auxiliary AC outlets (unused)
5. On/Off rocker power switch
6. Shipping Screws (to be removed during unpacking/ initial setup)



## 2. UNPACKING & OPERATION (CONTINUED)

**FIGURE 3**  
**PC & WIRING “WELL”**

1. Removable work surface locks down from the inside of the “well”
2. Multi-outlet extension cord



### Charging the Battery Power System

- To begin charging your battery power system, plug the AC line coiled cord into an AC wall outlet. The battery system will automatically detect the battery status and begin charging. The number of lit LED's will indicate the battery “state of charge”; each of the 5 LEDs represents the charge level in 20% increments (Reference Fig. 4).
- There is no need to fully discharge the battery before charging; plug it in at any time. For best performance, do not leave your batteries completely discharged. When your battery power system runs down, charge it immediately and refresh the charge once every 60 days during storage.
- When your battery is fully charged, it will automatically switch to “float” charge. This will occur about 1 to 2 hours after the last LED lights. It is OK to leave your battery plugged in indefinitely; no damage or battery degradation will occur.

NOTE: The blinking LED is only used as a low battery warning, and will not “blink” at any other time. When recharging a fully drained battery, the charge status will begin by blinking the first LED on the left of the 5 LED display.

## 2. UNPACKING & OPERATION (CONTINUED)

### Battery Power Status 5 LED Display (Reference Fig.4)

#### Discharge Status:

- Your battery power system will communicate power level status using the 5 segment LED indicator on the front panel of the removable work surface or down low on the battery cover. During operation a solid LED will move progressively from right to left on the display to indicate the power capacity remaining.
- When the LED display goes to 1 LED blinking (on the far left), it is time to plug in your battery power system and recharge the unit.
- If you continue to run on battery power after 1 LED starts to blink, your battery power system will automatically disconnect the AC output going to the outlets on the rear of the battery. It will shut itself off to preserve the onboard battery.
- You must recharge the batteries before power can be restored to the PC and accessories.

NOTE: When the Battery Power System shuts off the AC power, computers without internal batteries, such as laptops, will shut down, causing the possible data loss or corruption.

#### Charge Status:

- When charging from a fully discharged state, a blinking green LED will turn on solid and then will move from left to right, as capacity is returned to the battery pack. Your batteries will be fully charged approximately 1-2 hours after 5 LED's turn on solid green.
- Your battery can be taken off charge at anytime during its charge cycle; however, it is recommended allowing the battery pack capacity to reach the 5th green LED to the right, before you terminate charging process.

NOTE: The blinking LED is only used as a low battery warning, and will not blink at any other time. When recharging a fully drained battery, the charge status will begin with the first LED on the left of the display and moving to the right.

### Easy Guide to Reading the LED Power Display

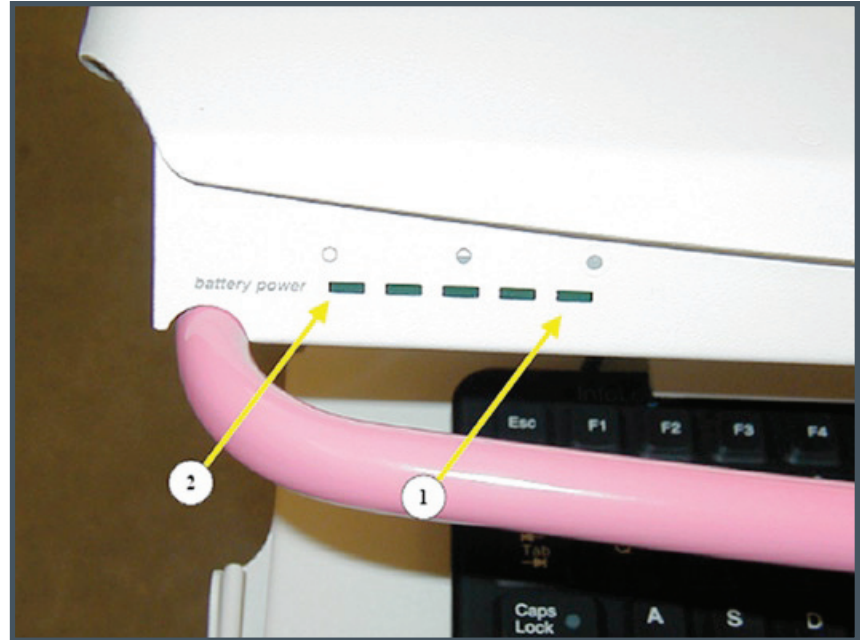
#### Number of LED's Lit & State Of Charge (% Capacity Remaining)

- 5 Solid Green 80-100 %
- 4 Solid Green 60-80 %
- 3 Solid Green 40-60 %
- 2 Solid Green 20-40 %
- 1 Solid Green 15-20 %
- 1 Blinking Green <15 %
- 0 (No LED's lit) - Fully Discharged, or Fully Charged, No Load Running

## 2. UNPACKING & OPERATION (CONTINUED)

**FIGURE 4**  
**LED BATTERY STATUS**  
**(CAPACITY)**

1. LED power gauge – 80-100% battery charge.
2. LED power gauge when solid green, 15 to 20% power remaining. LED power gauge, blinking green, recharge battery now.



## 3. BATTERY REMOVAL & INSTALLATION

### Battery Power System Removal

- Step 1** Refer back to Fig. 1 or 2, Item 5. Turn power off by switching the rocker power switch to the “O” or “Off” position.
- Step 2** Next, unplug AC multi-outlet extension cord plug from battery power system 120VAC outlet (Reference Fig.6, Item 1) and LED display cable plug from its associated receptacle connector (Reference Fig. 6, Item 2).
- Step 3** Shipping screws should have been removed during setup and installation. If they are still in place, make sure Quick Release Bracket is in the “down” position and remove two shipping screws. Then rotate the Quick Release Bracket into the “up” position and slide Battery power system down the ramp to the floor below. See Fig. 6 for a view of the battery power system disengaged from the ramp.
- Step 4** Keep AC line cord connected/secured to the Battery Power System and put complete assembly aside.

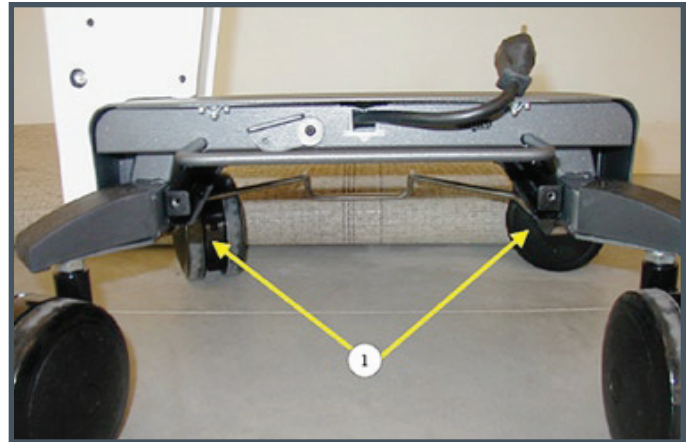
### Battery Power System Installation

- Step 1** Refer to Fig. 6. Before proceeding, ensure quick release bracket is in the “up” position. Place battery power system at the beginning of the ramp, engage the ramp and slide the battery unit up the ramp.
- Step 2** With Battery Power System all the way up the ramp, rotate quick release bracket into the “down” position.
- Step 3** Plug in both AC multi-outlet extension cord plug into 120 VAC outlet and LED Display cable plug into its mating connector. Reference Fig. 6, Items 1& 2.
- Step 4** Turn power on by switching the rocker power switch to the “I” or “On” position.

### 3. BATTERY REMOVAL & INSTALLATION (CONTINUED)

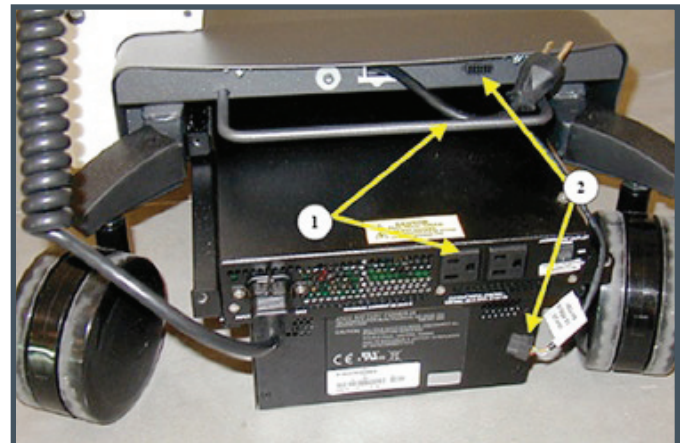
**FIGURE 5  
BATTERY POWER SYSTEM RAMP MOUNTING  
MECHANISM**

1. Left & right ramp system mounting rails.



**FIGURE 6  
BATTERY POWER SYSTEM JUST PRIOR TO  
ENTERING RAMP**

1. 120VAC outlet and its associated plug-end of multi-outlet extension cord.
2. LED display signal line receptacle connector and its associated plug coming from battery power system.



## 4. BEST PRACTICES & TROUBLE SHOOTING

### Best Practice Guidelines for Optimum Performance and Maintenance-Free Battery Operation

#### Best Practice Guidelines:

- Battery power system should always be plugged in for recharging when not in use or when in use near a wall outlet.
- SLA-type batteries do not require full discharge before recharge. Your battery will last longer if not fully discharged. Recharge more often to extend battery cycle (1-full discharge & recharge) life.
- Do not operate PC without “plugging in” charger if the power gauge has 1-LED flashing. This is an indication of very little remaining charge.
- You can continue to use your computer during recharge, but this may increase time needed to completely recharge battery pack.
- Do not store you mobile cart for extended periods of time without having charger AC line cord “plugged in” to wall outlet to maintain battery at full charge.
- Help increase battery runtime by using and enabling “power save” features on your laptop or PC.
- SLA-type batteries last longer with partial, rather than full discharges.
- Lead-acid batteries must be recycled.

## 4. BEST PRACTICES & TROUBLE SHOOTING (CONTINUED)

Trouble Shooting Problem: PC will not “power up” and no LED’s are lit		
Problem	Cause	Solution
<p><b>PC will not “power up” and no LED’s are lit:</b></p>	<ol style="list-style-type: none"> <li>1. Battery power switch is in “Off” position.</li> <li>2. Battery AC line cord not plugged into a wall outlet.</li> <li>3. AC line cord not plugged securely into the battery.</li> <li>4. Batteries are completely discharged.</li> <li>5. Battery Power System has an internal malfunction.</li> </ol>	<ol style="list-style-type: none"> <li>1. Turn on rocker power switch.</li> <li>2. Plug AC line cord into suitable AC wall outlet.</li> <li>3. Refer to work instruction TBD.</li> <li>4. Make sure AC line cord is plugged into wall outlet; place rocker switch in the “Off” position; let charge for at least 4 hours before trying to operate.</li> <li>5. Contact factory or reseller for authorization to return Battery Power System.</li> </ol>
<p><b>PC will not “power up” and some or all LED’s are lit:</b></p>	<ol style="list-style-type: none"> <li>1. PC power switch is in “Off” position.</li> <li>2. Multi-outlet extension cord not plugged into battery outlet receptacle or PC line cord not plugged into multi-outlet extension cord.</li> <li>3. PC has internal malfunction.</li> <li>4. Overload placed on Battery Power System. PC and/or monitor are trying to pull more than “rated” power from the battery.</li> </ol>	<ol style="list-style-type: none"> <li>1. Turn on rocker power switch.</li> <li>2. Plug male end of extension cord into battery AC outlet and/or plug PC power cord into multi-outlet extension cord.</li> <li>3. Consult PC owner’s manual.</li> <li>4. Switch to a lower wattage PC and/or monitor.</li> <li>5. Contact factory or reseller for authorization to return Battery Power System.</li> </ol>

## 4. BEST PRACTICES & TROUBLE SHOOTING (CONTINUED)

Trouble Shooting Problem: PC will not “power up” and no LED’s are lit		
Problem	Cause	Solution
<ol style="list-style-type: none"> <li>1. Batteries fully charged, PC/all accessories are “off,” charger not plugged in.</li> <li>2. Batteries fully discharged, charger not plugged in.</li> <li>3. Battery capacity between 1 LED blinking and 4 LED’s lit, charger plugged in.</li> <li>4. Battery fully charged, PC/all accessories “on,” charger is not plugged in.</li> </ol>	<ol style="list-style-type: none"> <li>1. Normal condition.</li> <li>2. Normal condition.</li> <li>3. Battery Power System has internal malfunction.</li> <li>4. Battery Power System has internal malfunction.</li> </ol>	<ol style="list-style-type: none"> <li>1. LED display should be off – normal condition.</li> <li>2. LED display should be off – normal condition. With charger plugged in and left, most LED’s will blink.</li> <li>3. LED display should be lit showing battery capacity accurately. Contact factory or reseller for authorization to return Battery Power System.</li> <li>4. LED display should be lit showing battery capacity accurately. Contact factory or reseller for authorization to return Battery Power System.</li> </ol>

## 5. SPECIFICATIONS

J-24 Specifications	J-48 Specifications
<ul style="list-style-type: none"> <li>• Platform: 24V, 2-battery string, Sealed-Lead-Acid (SLA)</li> <li>• Output Power Type: True Sine Wave Inverter</li> <li>• Output Voltage (Nom.): 120 Volts AC</li> <li>• Frequency Range: 57-63 Hz</li> <li>• Output Current: 0.83 Amps max</li> <li>• Output Power: 100 VA</li> <li>• Battery String Capacity: 360 Watt-Hours Total</li> <li>• Input Voltage Range: 90-240 VAC</li> <li>• Frequency Range: 47-63 Hz</li> <li>• Input Current: 3.9 Amps max</li> <li>• Input Power 390 VA</li> <li>• Outlets: 2 available on lower, center rear of unit</li> <li>• On/Off Switch: Turns outlets on/off, rocker switch on lower, right rear of battery power system.</li> </ul>	<ul style="list-style-type: none"> <li>• Platform: 48V, 4-battery string, Sealed-Lead-Acid (SLA)</li> <li>• Output Power Type: True Sine Wave Inverter</li> <li>• Output Voltage (Nom): 120 Volts AC</li> <li>• Frequency Range: 57-63 Hz</li> <li>• Output Current: 2.1 Amps max</li> <li>• Output Power: 250 VA</li> <li>• Battery String Capacity: 720 Watt-Hours Total</li> <li>• Input Voltage Range: 90-240 VAC</li> <li>• Frequency Range: 47-63 Hz</li> <li>• Input Current: 4.9 Amps max</li> <li>• Input Power: 490 VA</li> <li>• Outlets: 3 available on lower, center rear of unit</li> <li>• On/Off Switch: Turns outlets on/off, rocker switch on lower, right rear of battery power system.</li> </ul>

## 6. TECHNICAL SUPPORT SERVICES

InfoLogix is committed to providing 100% quality on all products shipped with complete customer satisfaction.

If a question arises you should contact either your InfoLogix Sales Representative or the InfoLogix Help Desk.

InfoLogix provides technical assistance as required to resolve any issue that may arise.

### This could include:

- Technical drawings of specific products or options.
- Assembly instructions of options.
- Rework instructions if components need to be replaced in the field.
- Direct factory technical assistance via phone as required.

### Help Desk Support

The InfoLogix Help Desk is available when you need quick answers to your troubleshooting questions. Our expert technicians have been providing technology support for more than a decade. We offer basic services as well as a wide range of optional custom services.

To initiate support, call (215) 639-8899, at the menu prompt, select InfoLogix support. We can be reached Monday through Friday from 8:30 am to 5:30 pm eastern time.

[www.infologix.com/support](http://www.infologix.com/support)

### The support analyst will require the following information to process your call:

- Company Name
- Contact
- Address
- Phone Number
- Email Address
- Model Number
- Serial Number
- Problem Description

**Contact JACO Support for cart and/or power supply warranty issues at 866-803-0101.**

